

The Friends of Colchester Museums

Fifty Ninth Annual Report
2007-2008



The Friends of Colchester Museums

OFFICERS

President His Worship the Mayor

Vice Presidents MRS JEAN BAKER
MRS BARBARA NAPPER
MARK DAVIES
LEN DRINKELL
PAUL SPENDLOVE

Honorary Members MRS R. J BRISTOW
LEN DRINKELL

Honorary Treasurer PETER EVANS
5 Grimston Road Colchester CO2 7RN
Telephone 01206 540990 Email peter@evans7978.fsnet.co.uk

Honorary Secretary PATRICK DENNEY
247 Old Heath Road Colchester CO3 8BN
Telephone 01206 796822 Email patrick.denney@ntlworld.com

Honorary Auditor ROY ANDERSON

Committee ANDREW PHILLIPS (Chairman)
MRS JEAN BLOWERS
MRS JANE REES
HARRY CARLO
PETER CONSTABLE
PATRICK DENNEY
LEN DRINKELL
PETER EVANS
ANDREW MILLAR

Ex Officio PETER BERRIDGE (General Manager, Colchester & Ipswich Museums)
TOM HODGSON (Curator of Social History)
PHILIP WISE (Curator of Archaeology)

Museum Office Colchester Museums Resource Centre
14 Ryegate Road Colchester CO1 1TW

Fifty Ninth Annual Report 2007-2008

ANNUAL GENERAL MEETING

The AGM took place on Tuesday 24th June at Lion Walk Church, under the chairmanship of Andrew Phillips, in the absence of the Mayor of Colchester. Audited Accounts for the year were presented and approved and are featured on pages 4 and 5. Among the business discussed, Mr Mark Davies was elected to the Committee.

Following the business part of the evening, DAVID CAWDELL gave a lecture entitled *Grandad Played the Cornet*, which also the title of his book, giving the history of Brass Bands in Colchester and North East Essex.

SUBSCRIPTIONS

Subscriptions for 2008 became due on 1st January - single £7.50, couple £12, and family £18. If you pay by Standing Order, please check that you are paying the correct amount and make any adjustments with your bank as necessary.

Please contact the Treasurer, Peter Evans on 01206 540990 if you are not sure of the status of your membership.

GIFT AID

We raised over £1,500 from Gift Aid claimed on annual subscriptions for the year ended 31 March 2008. Most members have signed up for the scheme and it is hoped that more will do so in the future.

Once you have signed a Gift Aid form, you have no need to complete any other forms - and we can backdate claims to cover any contributions made since 2000 or the date that you joined.

To sign the form, you do need to be a UK tax payer, but apart from that, there are no other qualifications. The Friends hold your authority and can use this to claim back Gift Aid on all contributions on subscriptions.

If you make donations at any time, we can claim on those as well. Many thanks.

PETER EVANS
Hon. Treasurer

MEMBERSHIP UPDATE (at July 2008)

Single	295
Couples	183
Families	162
Other	10
Total	650

If we were to break down the couple and family members into individual numbers, our total membership would be over 1,300, which is our highest ever..

LECTURE SERIES 2008

The first of our new lecture series for 2008 was held on Tuesday 15th April when BERNARD POLLEY and friends from the Colchester Film Society presented an intriguing compilation of films from bygone Colchester. The event was very well attended attracting an audience of 169 - our highest ever. Further subjects discussed by our visiting speakers included - Jam-making in Tiptree, Dirt and Disease in Victorian Colchester, Boudica, Thomas Fairfax and the Siege of Colchester and the History of Brass Bands in NE Essex.

Please note that our autumn series of talks commences on Tuesday 9th September when REBECCA PERRY from Colchester Zoo will be talking on the subject *The Work of Colchester Zoo and Charity Action for the Wild*.

Following this are five interesting subjects taking us up to the Christmas/New Year break. Complete details, including speakers, can be found on the back cover of this publication.

Our New Year mailing will provide all the details of the programme of Lectures which will start in April 2009, so keep a look out for it coming through your letterbox in early 2009.



GAINSBOROUGH'S HOUSE, SUDBURY

On Tuesday 20th May more than 40 Friends enjoyed a fine and relaxed evening at Gainsborough's House, Sudbury.

Upon arrival we were led into a large lecture hall where Diane Perkins, Director of the House, presented an informative slide show highlighting many paintings in the collection.

We were then treated to refreshments in the adjoining garden before being able to browse the exhibits at our leisure and visit the well stocked souvenir shop. A most satisfactory evening was enjoyed by all.

PATRICK DENNEY



Two Friends viewing one of the many exhibits



Friends enjoying the refreshments and a chat

IT'S A BARGAIN! PROOF - IF PROOF WERE NEEDED

Many members will be going to see the 'Guardians To The King' exhibition but will not have pay admission charges. As we do not have to pay, we tend to forget what admission charges are. At present they are;

- Adult £5.20
- Child or concessions £3.40
- Family (Saver ticket) £13.90 - up to 4 people

Our subscriptions - which cover you for as many admissions as you like in a year - are only:

Single member	£7.50
Couples	£12.00
Family (4 people)	£18.00

You also get reduced rates for entry to our talks, invitations to special open evenings like the recent 'Guardians To The King' exhibition and our newsletters.

FRIENDS OF THE IPSWICH MUSEUMS

On 27th June over fifty of us had a really delightful trip to meet our opposite numbers at Colchester Castle. We stepped out of the coach to see the Colchester Friends' Committee waiting to greet us and reciprocate the visit their members made to Christchurch Mansion in Ipswich a while ago.

Soon divided into groups, we plunged into the deep with Patrick Denney and Andrew Phillips the perfect guides to the wealth of Roman history below the Castle. Some of our group may have been wary of the contortions required to get into the lowest parts of the Temple and it was surprising that many of our members were making a first visit to this splendid and well organised museum. The other group had ample time to inspect the displays in the Castle. The hospitality was generous and we send thanks to the Colchester Committee for the warm welcome. We must plan further exchanges of this sort!

Then on 26th July over forty of us were back on our coach for a special joint private view of the 'Guardians of the King'. What a wonderful exhibition this is and how fortunate we all are to have a chance to look at these

evocative figurines - not as miniature as might have been expected. They are beautifully displayed and lit in state of the art cases. For this joint event, with Colchester Friends, some two hundred of us were greeted by Lynette Burgess, and Tom Hodgson told us something about the negotiations and transportation of these fragile and priceless artefacts. We were well looked after with drinks and nibbles and we all had ample time to study the displays and informative wall panels.

Only a few weeks later, in the opening ceremony of the Olympic Games, I was fascinated to witness a long sleeved dance as one of the items in the programme: just such a dancer is captured forever there in this exhibition with a video projection of the same graceful movements - that's tradition for you.

Let us hope that this is the start of a long term relationship: the display has been loaned by Xuzhou Museum in Jiangsu Province.

ALAN SWERDLOW
Vice-President FOIM

P.S. At Ipswich Town Hall Gallery 3 we have Dragons, Silks and Stories, an exhibition drawn from the Ipswich collections of Chinese artefacts.



'Follow me', Patrick said... ... and we went into the vaults... ... in fact, we stooped lower and lower...

Museum News

'GUARDIANS TO THE KING' – EXHIBITION OPENS

After many months of hard work the long awaited 'Guardians to the King' exhibition opened at Colchester Castle on Saturday 19th July!

The previous evening saw a private preview event in which invited guests caught a first glimpse of this stunning exhibition. Guests on the night included staff from Xuzhou Museum in China, the deputy mayor of Colchester, the deputy mayor of Ipswich and Lord Hanningfield, leader of Essex County Council. The preview night was an overwhelming success and the feedback on the exhibition was extremely positive.

The public opening day of the exhibition saw a programme of special events taking place which included live Chinese drumming, Chinese entertainment and Han Dynasty soldiers - who put visitors through their paces! The day was a great success and over the course of the opening weekend the Castle saw more than 1,000 visitors come through the doors – a brilliant result.

On Wednesday 23rd July the Castle hosted a tourism evening which was attended by national and regional tourism professionals, as well as regional accommodation providers, visitor information centres and more. Guests also included National Express, with which the museums have secured an excellent 'travel by train' package and the East of England Tourist Board who are selling online tickets to the exhibition. Both incentives are proving to be a great success so far and online ticket sales have shown the marketing team that visitors are travelling from as far as Yorkshire, London and Bedfordshire to see the exhibition!

Some of you may have attended the special friends evening that was hosted on Saturday 26th July to view the exhibition. The response to this evening was truly overwhelming and spaces filled very quickly indeed! If you were unable to attend this evening then don't forget you can still view the exhibition until Sunday 2nd November.

The exhibition is going tremendously well and continues to receive substantial regional and national press coverage!



HAN DYNASTY TREASURES OF XUZHOU – MUSEUM STAFF VISIT

Tom Hodgson

I hope that you all have, or are planning to visit Colchester Castle Museum to see the exhibition ‘Guardians to the King’ before it ends on 2 November. The exhibition is quite a coup for the museum service as the terracotta figurines are on their first visit to Britain and can only be seen in Colchester.

The exhibition has happened thanks to the close ties that have existed for 20 years between Essex and Jiangsu Province in China. Xuzhou Museum offered the figurines on loan to a museum in Essex as part of the Jiangsu Festival that has been arranged in the county this year. It was decided that Colchester Castle Museum would be the best venue and an agreement was signed between the two museums. The agreement included a reciprocal visit by delegations from both museums in order to accompany the figurines on their journey to

Colchester and ensure their safe installation in the Castle. I was fortunate enough to be a member of the delegation to Xuzhou. The trip gave me a chance to learn a great deal more about the background to the figurines that we have borrowed.

Xuzhou is in the north of Jiangsu Province about midway between Beijing and Shanghai. Despite an interest in geography, I must admit that I had never heard of Xuzhou previously, which was a slight embarrassment since it is a city of 1.8m people. It is not on the foreign tourist circuit, in fact I could find only one guidebook that even mentioned the city, and that in a single short and dismissive paragraph. I can only say that if a city in Britain had the same number and quality of archaeological sites then it would be on the must visit list.

continued on page 8

JAM, JAM, JAM

Members present will recall that our speaker from Wilkins Jam generously left us 18 jars of their finest jams: 6 loganberry, 6 little scarlet strawberry and 6 tawny orange marmalade. These are now being offered to members - to the highest bidders - maximum 3 jars per person; minimum bid £1.00.

Send your bid on the form below. Note: these jars normally retail at around £2.00 each.



Name
PLEASE PRINT
Address
.....
.....

Bid Price £ per jar
No. of Jars requested

Send this form to: Andrew Phillips, 19 Victoria Road, Colchester CO3 3NT (or hand it in at our first meeting). Successful bidders can collect their jars at any of our meetings. First come, first served with the variety.

The Friends of Colchester Museums

Income and Expenditure Account for

INCOME	2007/8	2006/7
Note	(£s)	(£s)
Subscriptions	6811.00	6062.00
Donations	193.50	154.50
Lectures (net of expenses)	657.95	774.20
1. Trips (net profit)	354.00	198.50
Gift Aid	1506.36	1627.22
Interest	891.20	777.89
Sales	-	50.00
Surplus of Expenditure over Income		4736.39
TOTAL	£10,414.01	£14380.70

Balance Sheet as

ACCUMULATED FUND	(£s)	(£s)
Balance bought forward	21907.81	26644.20
Add: Surplus/Loss for year	-8713.63	4736.39
	SUB TOTAL	30621.44
CREDITORS: Fees for Trips	246.50	529.00
Other	300.00	125.00
TOTAL	£31167.94	£22561.81

Notes to the Accounts:

1. Relates to trip to Gainsborough's House, Sudbury
2. Although some purchases are pending, none were completed in 2007/8

Annual Accounts 2007-2008

the year ended 31 March 2008


EXPENDITURE	2007/8	2006/7
Note	(£s)	(£s)
Operating Expenses	1300.38	1634.29
Subscriptions and Insurance (BAFM)	300.00	333.59
Events (Christmas Open Evening)	150.00	125.00
Exhibition Launch	-	118.82
2. Purchases and Grants	-	12169.00
Surplus of Income over Expenditure	8713.63	-
	TOTAL	
	£10464.01	£14380.70

at 31 March 2008

NET CURRENT ASSETS	(£s)	(£s)
Cash at Bank		
Current Account	1856.14	1041.21
Building Society Account	29071.80	21280.60
	SUB-TOTAL	22321.81
DEBTOR: Room Hire	240.00	240.00
	TOTAL	
	£31167.94	£22561.81

I have examined the accounts of The Friends of Colchester Museums for the year ended 31 March 2008 and confirm that they appear to be in accordance with the Books of Account and Vouchers produced to me for the purpose of this audit.

Signed  ROY ANDERSON *Hon. Auditor* Dated: 24 June 2007

Signed  PETER EVANS FMAAT *Hon. Treasurer*

continued from page 5

A tour of Xuzhou Museum on the first day revealed the importance of the archaeology. Xuzhou has a long history. The city was originally called Pengcheng and traces its origins back to the Neolithic, 6,000 years ago. The museum has a fine collection of tripod pots and other items of pottery and stone from this period.

Pengcheng's heyday was during the Western Han Dynasty, over 2,000 years ago when it was the capital of the kings of Chu. Liu Bang, the first Han Emperor who was born near Pengcheng, set up his younger half brother as King of Chu as a reward for supporting him in becoming emperor.

There were 12 kings in all, ruling from 201BC to AD8. They were buried in tombs cut into the rocky hillsides around the city and it is the finds from these royal tombs that form the centrepiece of Xuzhou Museum's displays.

As well as many pottery figurines, made to protect and serve the king in the afterlife, there are also items of bronze, gold and jade. These include a spectacular jade burial suit, discovered in Shizishan tomb, that has been painstakingly restored to its original glory. In fact it looks so good that I thought it was a replica! Jade was, and still is, highly prized in China because of its hardness and durability – qualities that were seen as transferring to the wearer to give long life or to preserve the body after death.

Over the next few days we visited further Han Dynasty sites. Of particular interest were the tombs at Shizishan and Guishan. Shizishan (Lion Hill) is a complex of sites and the source of most of the figurines on display in the 'Guardians to the King' exhibition. In 1984 a series of pits containing 4,000 soldiers drawn up in columns were discovered by Professor Li, now the Curator of Xuzhou Museum. He realised that there must be a royal tomb nearby, but it took him a decade to locate it.

The warrior pits are now showcased

within a building that has some of the best interpretation panels that I have seen. The fact that the text on the graphic panels is in Chinese hardly detracted from my understanding of the information being conveyed about what the figurines tell us of soldiers and warfare during the Han Dynasty. Two adjoining pits that contained models of horses and chariots are now preserved in buildings in the middle of a lake.

The tomb itself is fronted by a visitor centre. Once inside a sloping ramp leads down between high rock walls into a low corridor off which are a number of rooms that housed kitchens, armouries, stables and latrines as well as the burial chamber. This was a palace for the afterlife.

There is no direct evidence telling which of the kings was buried here in the jade suit, but circumstantial evidence points to it being the tomb of Liu Wu, the third King of Chu who committed suicide in 154BC after a failed rebellion against the Emperor.

Guishan (Tortoise Hill) tomb was even more fascinating to visit. It is a double tomb, built for Liu Zhu, the sixth King of Chu, and his wife. Here there are two parallel corridors leading into the hillside with a symmetrical sequence of rooms and a linking passage deep inside the hill. The floors, walls and ceilings have been carved at perfect right angles. Channels cut in the floor of the corridors were explained in an excellent film (in Chinese, but, again because of the clarity of the graphics, perfectly intelligible) as a hydraulic system allowing 16 eight ton granite blocks to be moved into position to seal the entrance corridor.

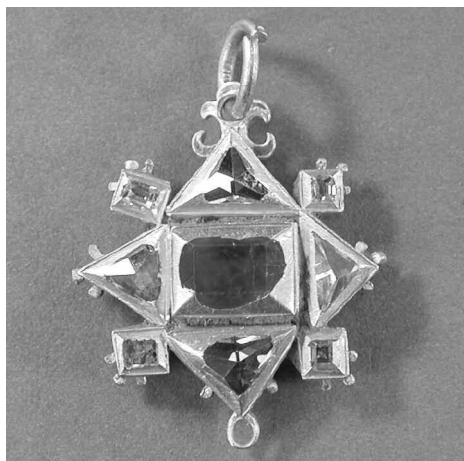
Despite this immense precaution, both here and at Shizishan, the tombs were raided over the centuries. However, the robbers only discovered a fraction of the contents, which has left so much for us to enjoy.

A GOLD AND DIAMOND PENDANT FROM ESSEX

Philip J Wise

The museum service is in the process of acquiring a very important piece of antique jewellery with help from the Friends. It is a gold and diamond pendant, found by a metal detectorist near Brentwood, Essex in October 2006 and subsequently declared to be treasure.

The pendant is lozenge-shaped, with four triangular-cut diamonds at the corners, four projecting table-cut diamonds in between them and at the centre a table-cut ruby in a gold setting. On the back there is a central gold star motif surrounded by green enamel, and two scrolls of gold which may represent a pin fitting. The pendant is quite small, measuring only 20mm by 20mm ($\frac{3}{4}$ in by $\frac{3}{4}$ in).



It is of late Tudor date and is notable for the use of diamonds. Pendants such as this were worn by aristocratic, or even royal, women in various ways; attached to clothing or hanging from chains or ribbons. One particular fashion was the wearing of a pendant at the base of a stomacher, or belt; Queen Elizabeth I is shown wearing a similar pendant to this example in *The Armada Portrait* of c.1588 (Tyrwhitt Drake Collection), which has a pendant pearl attached and hangs from a ribbon bow. Further evidence

of the royal association of this type of jewellery is provided by Anne of Denmark, the wife of James I, who had a diamond pendant. It is difficult to say whether the pendant was made in England or elsewhere, such as the Low Countries.

This is a very rare opportunity for a public museum collection to acquire an outstanding example of the Elizabethan jeweller's art and arguably this is a nationally important object which has a significance beyond its contribution to the story of Tudor Essex.

COLCHESTER ROMAN CIRCUS

Philip J Wise

This project seeks to interpret and conserve the Roman Circus, or chariot-racing track, discovered at Colchester in late 2004. This is a unique Roman site in Britain and circuses are comparatively rare in Europe as a whole. The Colchester Circus has now been scheduled as a site of national importance and is one of the UK's most significant archaeological discoveries since 1945. At the time of its construction during the reign of Hadrian in c. AD120 the circus was the largest building in Roman Britain. It measures some 450m in length by 75m width and it is estimated that it had a seating capacity of 12,500 - 15,000.

A programme of public engagement relating to the Council's proposals for the future presentation of the Roman Circus has been undertaken during the last few weeks. The public have been asked for their views on the designs prepared by Headland Design Associates and Brock Carmichael Architects, and more generally how they would like to see the Circus site developed as a new visitor experience for the town in the future.

It is proposed to re-excavate a small section of the southern grandstand of the circus and cover it with a building to protect the fragile remains from the weather and other damage. This cover building would also serve as

a giant projection booth in which the visitor could see a virtual reality film of a chariot race in progress. In addition a self-guided trail would be established around the Circus site with a series of interpretation points telling the stories of the people, such as the charioteers and spectators, associated with the site in the Roman period. Other interpretation would be by means of scale models of the circus and prominent markers at key locations on the site.

The results of the public engagement have been very encouraging:

- Σ• Colchester residents have a high level of civic pride and were very enthusiastic about having such a unique site in their town.
- Σ• 93% of people made positive comments about the plans and 96.2% liked the proposals.
- Σ• 73% of people who replied, wanted to preserve the site.
- Σ• 93% of people wanted to see the site developed as a visitor centre, this included some people who did not like the proposed building.
- Σ• Schools both local and further away were enthusiastic about the plans.

In the meantime work is ongoing on preparing the Round One grant application to the Heritage Lottery Fund with a meeting held with regional HLF staff at the beginning of August to discuss the detail of the scheme. The application is due to be submitted at the end of the year.

TOWN WALL FUNDING SUCCESS

Colchester Council has been successful in its application to English Heritage for funding to support its repair programme on the Town Wall. The grant of £46,000 will be used to repair the stretch of the Wall behind the houses in Roman Road.

Funding has come from a special English Heritage grant scheme which supports repair work and conservation of historic buildings,

monuments and designated landscapes. Priority is given to schemes which prevent loss or damage to important archaeological sites.

Colchester's Town Wall is believed to be oldest in the country and was originally built shortly after the destruction of the town by Boudica in AD61. It was partially demolished after the Siege of Colchester in 1648 and has been much repaired over the centuries.

Excavation and survey work by the Colchester Archaeological Trust on the Roman Road stretch have already indicated that considerable traces of the Roman Wall survive amidst the medieval and later rebuilding. In particular the remains of the Roman foundations are now known to exist below ground level.

Work to repair the wall will begin later this year and we look forward to seeing its progress.

'FIGURING SPEECH' –

New Exhibition at Hollytrees Museum

On Tuesday 10th June a new temporary exhibition opened at Hollytrees Museum, Colchester. The exhibition, 'Figuring Speech', has been produced by Colchester and Ipswich Museum Service and explores Asperger's Syndrome.

Working with young people from the Colchester area with Asperger's Syndrome, two artists have created two animated films for the exhibition which explore the use of 'metaphor'. Many people with Asperger's Syndrome have difficulty understanding metaphors and common phrases because of an often literal interpretation of language. Through a series of interactive and creative workshops the artists have worked with the young people to create animations which help them understand some of our everyday and most common metaphors.

Along with the two films the exhibition seeks to explain Asperger's Syndrome further and highlight not only the difficulties of living

with it, but also the talents many people with Asperger's Syndrome have.

Free entry. Open Mon – Sat 10am – 5pm
Sun 11am – 5pm

1960s AND 1970s COSTUME at Christchurch Mansion

Two recent acquisitions are the inspiration for a display of 1960s and 1970s costume at Christchurch Mansion from July until December this year. The two dresses were both purchased in Ipswich and worn by the donor to Royal Air Force summer balls. The first is a white and floral print evening dress the donor bought in June 1968 from the Grosvenor fashion shop. The second is a bright yellow polyester pleated evening dress bought in June 1978 the design of which echoes ancient Greek and Roman dress and the 1920s pleated dresses by the designer Fortuny.

Also on display is a Mary Quant Ginger Group label mini dress from the mid-1960s and a black and white Susan Small dress and jacket with matching hat from the late 1960s. Other accessories include three hats with their original hat boxes which were bought from Frank Mason's in Ipswich and a pair of silver lurex knee-high boots from the early 1970s.

The costume currently on display makes up the majority of items in the Ipswich costume collection dating from the 1960s and 1970s. We have very few items of costume from the last 30 years so the two recent donations contribute greatly to strengthening the collection.

SUMMER EVENTS

The summer events programme at Colchester and Ipswich Museum Service, kicked off on the 19th July and continues until the 14th September. Over the course of the summer holidays more than 40 special events will be taking place!

Taking inspiration from the huge variety

of objects and stories in the museums, the events programme really has something from everyone. Whether it be the Saxons, Romans, Egyptians or Archaeology, Natural History or Social History there is a great deal of choice on offer.

DATES FOR YOUR DIARY:

THROUGH THE AGES FREE St Botolphs Priory, Colchester Saturday 30th August

In the beautiful surroundings of the Augustinian St Botolphs Priory thousands of years of history will be explored, celebrated and enjoyed with over 25 different activities to take part in. Starting from the Roman period and through to the Normans, Medieval and Victorians to the present day there will be something for everyone to enjoy, absolutely free!

HERITAGE OPEN DAYS – Colchester Sat 13th & Sun 14th September FREE

Don't miss out on your chance to explore Colchester's heritage as part of a special event taking place on Saturday 13th and Sunday 14th September 2008.

The two-day event opens the doors to properties, many of which are not normally open or accessible to the public. Heritage Open Days provide you with a unique opportunity to explore and enjoy these sometimes hidden, often curious and always interesting places in the Colchester area completely free of charge!

In and around Colchester. From 10am on both days.

HERITAGE OPEN DAYS – Christchurch Mansion, Ipswich Sunday 14th September FREE

Come along to Christchurch Mansion for a day of free activities exploring the fabulous Victorian era. You can enjoy some traditional

Victorian games on the lawn in front of the house which will be great fun for all of the family. There will be Victorian washing in the garden with your chance to use a dolly, copper, and carpet beater. How would you have done being a Victorian maid and washing the clothes for all of the people in the Mansion? Come and find out! You can also enjoy demonstrations of some traditional Victorian crafts including crochet and tatting and lots more.

Drop-in 10am – 4pm.

CHRISTMAS EVENTS CONFIRMED!

Although it seems like months away Christmas will be here before we know it and we are pleased to announce that the Christmas events have now been confirmed. Here is what you can look forward to over the festive period...

CHINA AT CHRISTMAS

**at Gallery 3,
Ipswich Town Hall Galleries
Saturday 6th December**

Come and find out if and how the Chinese celebrate Christmas. Take part in some fun drop-in activities including making your own Tree of Light decorations and lanterns to take home and brighten up the dark winter nights.

Free entrance to Gallery 3, 10am-5pm,
Drop-in activities, 10-4pm.

DECK THE HALLS

**at Hollytrees Museum
Sunday 7th December**

Christmas is approaching, and it is time to get your house in the Christmas spirit. At Hollytrees Museum we will get you started with a great selection of Christmas decorations to make. For one payment of £1.50, you can make all the decorations available. Come along and get your creativity flowing!

Drop-in any time 12.30pm - 4pm.

CHRISTMAS OPEN EVENING

**at Colchester Castle FREE
Wednesday 10th December**

The doors are flung open again for traditional Christmas carols, the Christmas quiz, fun and magic. Sip mulled wine, grab a mince pie, and take advantage of Santa's only visit to the castle during his busy schedule in December.

FREE ENTRY (£1 to see Santa and receive a gift). 4pm – 8.30pm.

(Please note, the castle will be closed from 3.30pm – 4pm to allow for preparations).

THE 12 DAYS OF CHRISTMAS

**at Ipswich Museum FREE
Saturday 13th December**

Follow the story of this famous carol around the museum to discover some fun and interactive activities and challenges. Can you find the turtle doves and calling birds in the fantastic Ogilvie collection? Perhaps you will have a go at drumming in our Mankind Gallery or listen to the stories of our Land Army Girl who milked the cows during WW2. Not to forget the Anglo-Saxon five gold rings! Come and be involved in all 12 days of Christmas in one day, collect stamps and retrieve your free advent chocolate. Too good to miss!

Free drop-in activities 10am-4pm. Free admission to Ipswich Museum.

Storytelling sessions at 11am, 12pm, 1pm, 2.30pm and 3.30pm.

A TUDOR CHRISTMAS

**at Christchurch Mansion
Sunday 14th December**

This Christmas come and get into the festive spirit at Christchurch Mansion. Come and discover what this time of year was like for the first family to live here and how they would have celebrated. Talk to our friendly costumed characters who will show you an

Elizabethan Christmas banquet. Listen to some traditional carols from through the ages and make your own decorations including clove pomanders. Don't forget to visit Father Christmas in his grotto too.

Free drop-in activities 10am-4pm.
Father Christmas, £2 per child 10am-4pm.
Make your own pomander, £1 per person.

FRIDAY 19th SEPTEMBER CAG DAYSCHOOL

The Colchester Archaeological Group is holding a dayschool on 'The Carpentry of Timber Framed Buildings in Essex 1250 to 1700'. It will be led by RICHARD SHACKLE, who will cover all aspects of timber-framing, using local examples for illustration.

The day will run from 10am until 4pm with breaks for coffee/tea and lunch. The venue will be The Hawkins Room, on the side of St Botolph's Church in Colchester.

There are a few places left on the dayschool and these are being offered to the Friends of The Museums.

The cost for the day is £11, to include tea/coffee but not lunch, and there may be an additional small amount to pay on the day, depending on numbers attending.

If you are interested, please contact Anna Moore on 01206 766638 or anna.moore@fsmail.net

UNIVERSITY OF ESSEX LOCAL HISTORY CENTRE 10 WEEK COURSES

Archaeology of Essex and East Anglia
by HOWARD BROOKS
Tuesdays from October 7th.

Family and Community in 19th Century Essex
by PAUL GLENISTER
Thursdays from October 9th.

COLCHESTER RECALLED

Colchester's Oral History Group, continues its monthly meetings on Thursday 11th September 2008 in the Board Room at the Colchester Institute at 7pm, when DAVID CLEVELAND is giving an illustrated talk *From Magic Lantern to Movies*.

On 16th October MYRA WILKINS' talk is entitled *Understanding Heraldry*.

On 13th November JOHN STEER presents *Restoring the World's Oldest Motor Lifeboat*, which was carried out at Walton.

NEW FAMILY HISTORY COURSES FOR 2008/09

Palaeography for Family Historians
parts 1, 2 and 3 (Cambridge Accredited)

Many family historians experience difficulty in reading the handwriting found in some old English documents.

This course will provide help in developing the skills necessary to read and transcribe a range of such sources.

Thursday evenings at the Wilson Marriage Centre - Tutor: PATRICK DENNEY
Starting 25 September for 10 weeks.
Course code: NWM4C28
Contact: Adult Community College
Telephone: 01206 798488

Seaside Resorts in 19th Century North-East Essex
by ANDREW SENTER from January 13th.

Infancy and Childhood in 19th Century Colchester and Essex
by PAUL GLENISTER from January 14th.

All courses run in the evening.
Enquiries to: Lisa West, Department of History, University of Essex, Wivenhoe Park, Colchester CO4 3SQ

Friends' Lecture Series 2008

THE FRIENDS OF COLCHESTER MUSEUMS

Tuesday 9th September

REBECCA PERRY

*The Work of Colchester Zoo and Charity Action
for the Wild*

Tuesday 23rd September

ROBERT NEEDHAM

Ringing in the Old: Experiences of a Town Crier

Tuesday 7th October

PAT BROWN

New Thoughts on Saxon Essex

Tuesday 21st October

ANDREW PHILLIPS

Colchester Between the Wars

Tuesday 4th November

HARVEY OSBORNE

*Game Laws: Leisure and Conflict in Victorian
East Anglia*

Tuesday 18th November

MARK DAVIES

*Colchester's Archaeological Heritage: Asset or
Liability?*

All at Lion Walk Church 7.30pm

Admission price per lecture:

Members £1 - Non Members £2.

For details contact PATRICK DENNEY
on 01206 796822.

THE FRIENDS OF IPSWICH MUSEUMS

Wednesday 1st October

7.30 pm at Museum Street Methodist Church,
Blackhorse Lane entrance.

Refreshments from 7.00 pm. Pay at door.

New Perspectives: An Introduction and Welcome

EMMA ROODHOUSE MA.

Recently appointed Ipswich and Colchester
Museum Services Fine and Decorative Arts
Curator. This will offer the chance to meet her,
to hear about some of her previous experiences
and her plans for the future, especially Ipswich!
Plenty of time will be allowed for questions.

Wednesday 5 November

7.30 pm at Museum Street Methodist Church,
Blackhorse Lane entrance.

Refreshments from 7.00 pm. Pay at door.

Digging in Morocco

PETER BERRIDGE, Ipswich and Colchester
Museums Manager

This will be 'hot off the press' as Peter will
have just returned from Morocco where he has
been working on a dig. It will be another way
of getting to know him and share his
enthusiasm of his interest in archaeology and
Morocco in particular.

Wednesday 3 December

7.30 pm in the Council Chamber, Town Hall.
Admission by ticket only. We regret there will
be no refreshments before this event.

A Year as Mayor

ROGER FERN

Recent Mayor of Ipswich, Councillor Roger
Fern has arranged for us to meet him in the
Council Chamber in the Town Hall, including
a tour of the mayoral offices and a detailed
look and explanation of the town regalia. He
will be accompanied by his wife Pat.

*N.B. Members of the Friends of either Museum
will be entitled to 'members' rates at all talks.*

*Details of both groups Lectures in 2009 will be
featured in the next edition of the Friends
Newsletter, due for publication early in the New Year.*