

# **The Friends of Colchester Museums**

Newsletter and  
Sixty Second Annual Report  
2010-2011



# The Friends of Colchester Museums

## OFFICERS as elected at the Annual General Meeting 2011

*President* Her Worship the Mayor, COUNCILLOR HELEN CHUAH

*Vice Presidents* MRS JEAN BAKER  
MRS BARBARA NAPPER  
MARK DAVIES  
LEN DRINKELL  
ANDREW PHILLIPS  
PAUL SPENDLOVE

*Honorary Members* MRS R J BRISTOW  
LEN DRINKELL

*Honorary Treasurer* PETER EVANS  
5 Grimston Road Colchester CO2 7RN  
Telephone 01206 540990 Email: peter.evans7978@btinternet.com

*Honorary Secretary* JANET FULFORD  
301 Mile End Road Colchester CO4 5EA  
Telephone 01206 851593 Email: jif301@btinternet.com

*Honorary Auditor* ROY ANDERSON

<i>Committee</i>	MARK DAVIES ( <i>Chairman</i> )	PETER EVANS
	MRS JEAN BLOWERS	CHRIS HALL
	HARRY CARLO	ANDREW MILLAR
	PETER CONSTABLE	ANDREW PHILLIPS
	PATRICK DENNEY	HARRY ROYLE
	LEN DRINKELL	DAVID WALTON

*Ex Officio* PETER BERRIDGE (*General Manager, Colchester and Ipswich Museum Service*)  
TOM HODGSON (*Community History Manager*)  
PHILIP WISE (*Heritage Manager*)

*Newsletter Editor* PETER CONSTABLE  
12 Claremont Heights, Essex Hall Road, Colchester CO1 1UZ  
Telephone 01206 517788 Email: design.constables@btinternet.com

*Museum Office* Museum Resource Centre  
14 Ryegate Road Colchester CO1 1YG  
Telephone 01206 282931/2

# Sixty First Annual Report 2010-2011

## **ANNUAL GENERAL MEETING**

The Annual General Meeting took place on Tuesday 21st June at Lion Walk Church. The Mayor of Colchester, Councillor Helen Chuah, took the chair. The audited accounts, see pages 8 and 9, were presented and approved.

Afterwards, KEN FREE gave a lecture entitled *Camp 186 - The Lost Town of Berechurch*, which was the site of the camp for German prisoners of war from 1945-1948, the site of which later became the Military Corrective Training Establishment. This was a highly enlightening lecture, enjoyed by all attending.

## **FROM THE CHAIRMAN**

Besides reports on past activities and new acquisitions which we have helped the Museum Service acquire, the following pages include details of forthcoming events.

### **Open Evening**

Please note the special Open Evening for Friends at the Castle Museum on Wednesday 28th September 2011, from 6.00 to 9.00pm.

Members will be able to hear more about the Castle Redevelopment Project, to which we have agreed to contribute £30,000, with a grant of more than £3.25M recently confirmed by the Heritage Lottery Fund. The current exhibition 'Buried! Hidden Secrets from the Past' can be viewed and Peter Berridge will give another short talk about the Castle.

**Friends of the Museum Website –**  
**[www.tfocm.com](http://www.tfocm.com)**

Our new website is intended to provide up-to-date information about our activities for members and others. It will also enable immediate communication between Friends and Committee members on urgent matters. Please log-on now at **[www.tfocm.com](http://www.tfocm.com)** to register your details. (Any personal details provided by members are for internal use only and will not be given to any third party).

This new facility will not replace our normal postal communications. However, if any member prefers to receive these by e-mail in future, we would like to hear from you. We hope that as many people as possible will enjoy making use of our new website.

### **Special Lecture**

On Saturday, 25th February at 2.30 pm we are joining the Colchester Archaeological Group and the Friends of Colchester Archaeological Trust in hosting a lecture in the main auditorium of the new Firstsite building. The speaker, Dr. Ralph Jackson, will be talking about the large collection of Colchester items in the British Museum. Full details and an application form are enclosed herewith for what should prove a most interesting and popular occasion.

MARK DAVIES *Chairman*

## **TREASURER'S TOPICS**

Subscriptions for 2011 became due on 1st January – single £7.50, couple £12 and family £18. Please check that you are paying the correct amount if you pay by Standing Order and make the necessary adjustments with your bank if required. Please contact the Treasurer, Peter Evans on 01206 540990 if you are not sure of the status of your membership. If your subscription is still outstanding, there will be a reminder enclosed with this report. Please let me have payment as soon as possible.

### **Gift Aid**

We still continue to claim Gift Aid from HM Customs & Revenue.

If you have not already completed a Gift Aid certificate, one will be enclosed with our next newsletter.

To be able to complete the certificate, you only need to be a UK taxpayer. We can back-date our claim on your contributions to 2000.

PETER EVANS *Hon Treasurer*



## **MEMBERSHIP UPDATE**

Our membership levels remain healthy with 721 signed up members compared with 710 for the same period last year. This, of course, includes all categories of membership, and the total number of individual members could be as high as 1440. So please keep spreading the word about the benefits of joining the Friends.

## **VISIT TO COGGESHALL - PAYCOCKE'S HOUSE AND THE GRANGE BARN**

On 28th June we enjoyed an evening visit to Paycocke's House and the Grange Barn at Coggeshall. About 50 members were in attendance and we were greeted at Paycocke's House by the resident custodian, Natalie Simpson, who gave us a warm welcome. We were then divided into two groups to explore the house and gardens, and to hear something

about the history of the building and the local area. We then made the short walk to the Grange Barn where we were met by our guide Stuart Banks, who began by serving most of the group with tea or coffee. We were told about the barn's





amazingly long history (over 700 years old), and given time to explore all its nooks and crannies.

ABOVE LEFT: *Members leaving Paycocke's on the way to the Grange Barn*

BELOW LEFT: *Members inside the Grange Barn, listening to the introduction by Stuart Banks*

ABOVE: *The main entrance to the Fitzwilliam Museum*

BELOW: *Members with one of our guides at the Botanical Gardens*

## **VISIT TO CAMBRIDGE - THE FITZWILLIAM MUSEUM AND THE BOTANICAL GARDENS**

Our second excursion for the year took place on Tuesday 12th July when we enjoyed a full day trip to Cambridge. In the morning we visited the Fitzwilliam Museum where we were split into three groups and taken on a tour of the galleries by some of the Cambridge Blue Badge guides. We then had time allowed to browse the exhibits by ourselves, or to perhaps



walk into the city centre for some lunch.

We met up again at 2pm at the nearby Botanic Gardens, where our guides showed us around some of the 40 or so acres of gardens. And thankfully, despite some threatening clouds, the weather remained fine.

*Outing reports and photography by*

PATRICK DENNEY

## ST BOTOLPH'S HISTORY FAYRE

The Friends had a stall at the History Fayre at St Botolph's Church on Saturday 9th July, where we signed up new members. This was an interesting day and we were able to explain our aims to a number of visitors.



*Our new Secretary, Janet Fulford at the Friends' stall at the History Fayre*

## THE GREAT COLCHESTER PHOTOSHOOT

From noon Friday 21st to noon Saturday 22nd October we are planning to photograph every aspect of life in Colchester. This follows a similar 24-hour photo shoot in 1986, exactly 25 years ago.

Everyone is invited to take part. Go to the website [www.colchester24.org](http://www.colchester24.org) to join. Any camera can be used. A list of topics that need covering is on the website – or you can pick your own. Photographs should include people in them and capture life today. Indoor photographs are particularly needed – life in the home, at work, in shops, offices, etc. All photographs will form a permanent archive, stored electronically. Some of the best 1986 photos are on display in Hollytrees Museum in September.

ANDREW PHILLIPS and PETER EVANS

## THE MAYOR'S CHARITY APPEAL FUND 2011-2012

Councillor Helen Chuah is pleased to announce the following events and would be grateful for your support.

**Thursday 8th September** Run4Fun in Lower Castle Park

**Tuesday 20th September** Parachute Regiment Concert at St Botolph's Church

**Thursday 3rd November** Tea Dance at Mersea Island Community Hall



*A scene in the grounds of St Botolph's Priory during the History Fayre*

**Thursday 10th November** Mayor's Charity Quiz at the Moot Hall  
**Sunday 13th November** Curry Lunch at the Oak Tree Centre  
**Saturday 31st December** New Year's Eve Dinner in the Mayoral Suite  
**Saturday 28th January 2012** Chinese New Year Celebration  
**Sunday 5th February** Teddy Bear's Concert at the Moot Hall  
**Friday 10th February** Beer Tasting at the

Moot Hall

**Saturday 18th February** Bach Choir Concert at St Botolph's Church

**March** Possible Supper in Samaritans' new premises and **April** Possible Banquet/Ball with the Phoenix Home Charity Group

**Friday 11th May** Mayor's Ball at the Moot Hall.

Details are available from the Mayoral Office, telephone 01206 282206.  
 Email: [mayor@colchester.gov.uk](mailto:mayor@colchester.gov.uk)

## Know Your Colchester?



Patrick Denney has kindly supplied the two photographs above.

Do you know the names of the buildings and where they were?

Answers please to the Editor at his address

### COLCHESTER RECALLED

Colchester's Oral History Group, which focuses on topics of interest concerning local history, continues its monthly meetings on Thursday 15th September in the Board Room at Colchester Institute, Sheepen Road, at 7pm, when JOHN GRICE is giving a talk entitled *All You Did Not Know About Music Halls*.

On Thursday 13th October, LAURA MCLEAN of the Colchester & Ipswich Museum Service is presenting *My Job is Finding Buried Treasure*, and the final lecture of the year is on



featured on the inside front cover by Tuesday 13th September.

The prize will be free admission to the rest of 2011's lectures for the first correct answer received to both pictures.

17th November when SEAN O'DELL's topic is entitled *Not Just Constable Country: Famous Artists and the Stour Valley*.

The Christmas Party is on 15th December featuring Patrick Denney's Picture Quiz of Colchester, the usual wine, mince pies and a video. All are welcome. Admission is £1 per evening. The meetings begin with recordings of peoples' reminiscences, followed by refreshments and the lecture.

Complete details are available from ANDREW PHILLIPS, telephone 01206 546775.

# The Friends of Colchester Museums

## Income and Expenditure Account for

INCOME	2010/11	2009/10
	(£s)	(£s)
Subscriptions	7134.50	7,348.00
Lectures (net of expenses)	663.00	792.90
Trips (net profit - note 1)	252.94	367.40
Gift Aid	1974.18	1,651.99
Interest	33.27	39.32
Donations	308.00	152.00
Sales/Raffled		60.50
Open Evening	118.02	
Surplus of Expenditure over Income	4041.32	-
	<u>£14525.23</u>	<u>10,412.11</u>

## Balance Sheet as

ACCUMULATED FUND	(£s)	(£s)
Balance brought forward	39878.05	36,789.91
Surplus/Loss for year	-4041.32	3088.14
TOTAL	35836.73	39878.05
CREDITORS:		
Fees for Trips	657.00	768.00
Colchester Recalled		48.00
	<u>£36493.73</u>	<u>40694.05</u>

### Notes to the Accounts

Note 1. Trips to Lavenham and Audley End. Joint trip to London with Colchester Recalled.

Note 2. Charity donation in 2009/10 for the late David Clarke, (former Museum Curator).

Note 3. Purchases - St John the Baptist gold figure £4500, Saxon die £1000, picture by In Hay £700, medieval gold ring £3000, other items £2665.

Note 4. Donation from funds £2,000 plus contributions from members.



# Annual Accounts 2010-2011


the year ended 31st March 2011

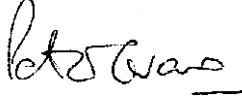
EXPENDITURE	2010/11 (£s)	2009/10 (£s)
Operating Expenses	2012.22	1767.62
Subscriptions and Insurance (British Association of Friends of Museums)	498.01	398.52
Donation (Note 2)		30.00
Events – Christmas Open Evening	150.00	125.00
Purchases (Note 3)	11865.00	2887.83
Donation to Roman Circus (Note 4)		2115.00
Surplus of Income over Expenditure		<u>3088.14</u>
		10412.11

at 31st March 2011

NET CURRENT ASSETS	(£s)	(£s)
Bank		
Current Account	2512.99	2420.76
Building Society	33716.74	37709.29
	<b>TOTAL</b>	<b>£36229.73</b>
DEBTORS: Room Hire	264.00	264.00
Cedrics Coaches		300.00
	<u>£36493.73</u>	<u>40694.05</u>

I have examined the accounts of The Friends of Colchester Museums for the year ended 31st March 2011 and confirm that they appear to be in accordance with the Books of Account and Vouchers produced to me for the purpose of this audit.

Signed  ROY ANDERSON *Hon. Auditor* Dated: 23rd June 2011

Signed  PETER EVANS FMAAT *Hon. Treasurer*

# Museum News

## COLCHESTER CASTLE REDEVELOPMENT PROJECT

Hot off the presses! At their meeting on 19th July the Heritage Lottery Fund (HLF) approved the award of £3,267,000 towards the Castle redevelopment project. This represents 77% of the costs of the £4.2m project with the match funding coming from Colchester Borough Council, the INTERREG IVA programme France (Channel) – England of the European Union, Renaissance museum hub funding, the Essex Heritage Trust and, of course, the Friends of Colchester Museums who are generously putting in £30,000. An application for £5,000 has also been submitted to the Hervey Benham Trust and their decision is expected soon.

Scheduled Monument Consent has been received from English Heritage for the proposed second lift. The glass encased lift will be situated next to the main stairs and will greatly improve visitor flow and orientation for those who use it. The current lift will be retained as a passenger and goods lift.

Further detailed development work will be carried out from August 2011 to February 2012. Colchester Castle will then close for redevelopment in January 2013 with re-opening planned for March 2014.

TOM HODGSON

## CASTLE OPEN EVENING

The Friends of Colchester Museums are cordially invited to an Open Evening at Colchester Castle on Wednesday 28th September from 6.00 to 9.00pm. Refreshments will be served.

During the evening Tom Hodgson will give an update on the Castle Redevelopment Project, Philip Wise will be highlighting some of the objects on display in 'Buried! Hidden Secrets from the Past', the current temporary

exhibition, and Peter Berridge will be exploring the long and smelly history of sanitary arrangements in the Castle!

We do hope to see you there.

## SUMMER EXHIBITION AT COLCHESTER CASTLE – 'BURIED! HIDDEN SECRETS FROM THE PAST'

The Buried! exhibition opens at Colchester Castle on 23rd July and runs until 29th January 2012. It looks at why things were hidden in the past. In the time before there were banks, coins were hidden for safekeeping in the ground during times of warfare and unrest. Sometimes the owners never returned to recover their savings. Centuries later these coin hoards are found by chance. Other objects were placed in graves to permanently accompany the dead on the journey to the afterlife. Sometimes objects were buried as offerings to the gods to ensure continuing good fortune. More recently items of clothing were walled up in old houses to protect the



*Anglo-Saxon gold pendant made from a coin of the Frankish king Dagobert (AD 629-639). This rare item of jewellery was found in the grave of a rich woman buried at Coddanham near Ipswich.*

good fortune. More recently items of clothing were walled up in old houses to protect the residents from evil forces.

Included in the exhibition will be spectacular coin hoards from the Iron Age to the English Civil War, stunning Anglo-Saxon jewellery from the Coddtenham cemetery in Suffolk and the rare 17th-century working man's coat found in an old building in Maldon. The exhibition will also have on loan from Norfolk Museums and Archaeology Service a group of finds from the Roman ritual site at Hockwold, from Braintree Museum some remarkable Roman bells and from Epping Forest Museum a selection of gold coins from the medieval Abridge hoard.

PHILIP WISE

## RECENT ACQUISITIONS

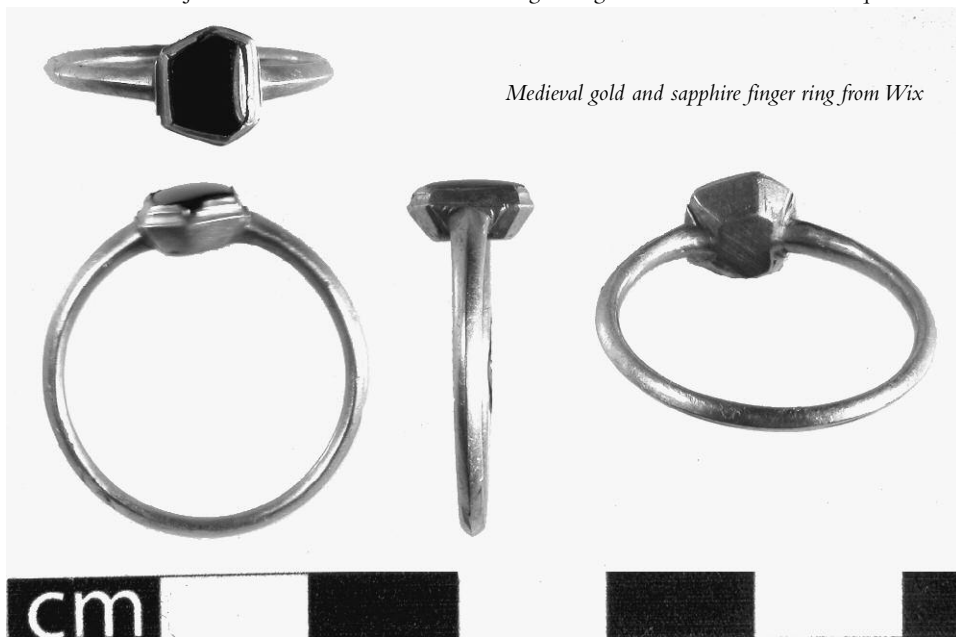
The Museum Service continues to acquire important archaeological finds and social history objects, often with financial support from the Friends.

The oldest object to enter the collections

recently is a rare Middle Bronze Age composite gold ring dating to between 1300-1100 BC, which was found by a metal detectorist at Wix, near Harwich. The ring comprises three thin strips soldered together and bent into an oval shape, with one end overlapping the other. Unusually, this object was donated by both the finder and landowner who both disclaimed their rewards under the provisions of the 1996 Treasure Act.

A particularly appropriate acquisition is a gold coin, or stater, issued by Cunobelin, who was described by the Roman writer Suetonius, as the 'King of the Britons'. It was minted around AD 40. On one side is an ear of corn and the letters CAM (short for Camulodunum) and on the other a running horse and the letters CVNO (short for Cunobelin). It was found close to the site of Cunobelin's mint at Sheepen, or Hilly Fields, around thirty years ago and purchased with a grant from the Friends.

In recent years Roman and medieval finger rings have become easier to acquire as a



*Medieval gold and sapphire finger ring from Wix*

result of changes in the Treasure legislation. The Museum Service has been actively collecting finger rings to fill gaps in its collection. The most recent is a medieval gold and sapphire finger ring from Wix, dating to the late twelfth or thirteenth centuries. Traditionally gold and sapphire rings were worn by bishops and there are several examples of such rings being found in graves, most notably that of Geoffrey de Ludham, Archbishop of York (d.1265) in York Minster. The purchase of this object was fully funded by the Friends of Colchester Museums.

Two recent acquisitions relate to the history of retailing in Colchester. Firstly, there are two early twentieth-century coat hangers printed with the shop name 'Clamp's Tailoring Co' which was located at 4 St Botolph Street, Colchester. The Clamp family owned several shops on the same street at different times, but Albert James Clamp was in business at No.4 in 1912. Secondly, the museum has been given two late 1990s carrier bags from shops in Colchester – Ace Comics and Octopus Clothing. While one of the shops has since closed down, Ace Comics is still successfully trading in Culver Street East, having started in 1981. The bags provide a record of examples of local independent shops in the town centre.

We are always interested in adding old toys to the collections and these are especially welcome if there is a strong local connection. Recently we were offered a Duke of York 'O' Gauge clockwork model train manufactured by Bassett Lowke of Northampton in 1927, which was donated with two rails, a carriage and its key.



*Iron Age gold coin  
of Cunobelin from  
Hilly Fields, Colchester*

The train was owned by Herbert Pinnock, who collected cigarette cards to exchange for the train. He was born in 1908 and came to Colchester before the Second World War. Once here, he ran a general store at the bottom of East Hill on the corner with Rosebury Avenue. Herbert Pinnock had three children and the donor, his middle child, explained that they were only allowed to play with the train on special occasions.

There are only a small number of items relating to Colchester United Football Club in the social history collections, so we were very pleased to receive two programmes for home games in the 1980s. One programme is for a match against Plymouth Argyle at the very beginning of the 1980-81 season when the club was in the Third Division. The other is from a 3-1 win against Cardiff City in 1986 when the club was in the Fourth Division.

In the 150th anniversary year of Colchester Castle becoming a museum it is very appropriate that we have been given something that relates directly to the history of the Castle as a public building. This is the floor plan for an edition of the BBC *Mastermind* quiz programme which was filmed at the Castle. The whole of the ground floor was taken over and the plan shows the layout of the seating for filming, particularly the location of the famous chair. The museum holds some slides which

show the set before filming started on the 10th November 1988.

PHILIP WISE and  
CATHERINE NEWLEY



*A Duke of York 'O' gauge clockwork train  
made around 1927*

## **NEW ROOTS PROJECT**

The Museum  
Service is currently

running a garden-based project called 'New Roots', which is engaging with people who have experienced homelessness in Colchester. Participants are working with freelance gardeners Marina O'Connell and Aidan Barty from the Apricot Centre, to grow plants and vegetables as well as learn about the nutritional aspect of fresh food.

The plants grown will be used to create a temporary garden installation at Hollytrees Museum in Castle Park in August 2011. Using furniture and household fittings as planters the garden will be set up as a bedsit to highlight the issue of homelessness in Colchester.

New Roots is part of a larger museum project working with homeless people called 'Out in the Open' funded by the Esmée Fairbairn Foundation.

CIARA CANNING

## **HERITAGE ROUNDUP**

### **Colchester Town Walls**

Bakers of Danbury has been appointed to undertake some repairs to the Priory Street stretch of the Town Walls. This work began in July 2011 and will take three months.

Elsewhere a major programme of repair work to the Middleborough/Balkerne Hill stretch of the Town Wall is currently being finalised. This work is part funded by English Heritage.

### **Colchester Roman Circus**

A further meeting with the designer Headland Design Associates is being arranged at which the detailed designs for the two installations on the Flagstaff Road playground site will be considered.

In the meantime liaison has continued with English Heritage, site landowners Taylor Wimpey and Bovis Homes and the Colchester Archaeological Trust.

## **Portable Antiquities**

Work on the remarkable Burnham Bronze Age hoard has continued, with additional filming by 360 Productions to feature in BBC2's *Digging for Britain* series to be aired in Autumn 2011.

## **Colchester Castle:**

Every five years a maintenance survey of Colchester Castle is undertaken. The most recent inspection took place in late 2010 and highlighted a number of areas of concern leading to a more detailed survey which was undertaken in January 2011. This identified a number of repairs to address the damage caused by the particularly severe winters in recent years. All four external walls of the Castle require repairs, but to varying degrees. The works to the western wall are considered to be the most urgent and as result will be carried out this summer. The repair work began in July and will continue until October. English Heritage have been involved with the planning of the proposed repairs from the outset and have provided valuable advice and support. The remaining three external walls of the Castle are scheduled to be repaired as soon as possible.

PHILIP WISE

## **NEWS FROM IPSWICH**

### **Ipswich Art School**

The Ipswich Art School fundraising campaign continues to gain momentum. A total of £313,000 capital funding and £95,000 revenue funding has now been secured towards ensuring a thriving future for this centre for contemporary art in Ipswich. Partnerships with University Campus Suffolk and the Saatchi Gallery are also developing well. The success of the Ipswich Art School, as well as the High Street Exhibition Gallery, will be a major catalyst for the Ipswich Museum redevelopment that will create a major cultural complex for Ipswich.

### **‘Ipswich Town in Europe’**

An exhibition to celebrate the 30th anniversary of Ipswich Town Football Club winning the UEFA Cup, was unveiled in Ipswich Town Hall in May. A partnership with the Football Club enabled much of the memorabilia they collected when taking part in European club football competitions over the last fifty years to go on full public display for the first time.

### **‘Frederick Ashton, the Ballet and Suffolk’**

Sir Frederick Ashton, Founder Choreographer of The Royal Ballet, was proud of his Suffolk roots. This Royal Opera House exhibition celebrates these links, his career with The Royal Ballet and the influence of his native countryside on his ballets. In the Town

Hall Gallery 3, Ashton’s long career with The Royal Ballet is recalled in a photographic exhibition, while post-1945 life behind the scenes at the Royal Opera House is evoked in a recreation of Margot Fonteyn’s dressing-room. Set and costume designs include those by Sophie Fedorovitch for *Dante Sonata* and John Piper for *The Quest*, plus costumes from *La Fille mal gardée*, including Stanley Holden’s clogs. Some of the material on display belonged to Ashton and has never been shown before.

In Christchurch Mansion, displays of costumes from Ashton’s ballets are exhibited in the historic room settings. They include his production of *Cinderella* and nine costumes from the *Tales of Beatrix Potter*.

This event is a partnership project between DanceEast’s Jerwood Dance House, the Museum Service and the Royal Opera House.

### **Henslow Exhibition**

To mark the 150th anniversary of the death of the Rev’d Prof. John Stevens Henslow, Ipswich Museum is mounting a small display in his honour.

Henslow was founder and President of Ipswich Museum from 1850–1861, but is more famously remembered as Charles Darwin’s tutor. He is also deeply entwined with the early days of Ipswich Museum, the development of the collections and for placing the museum at the forefront of the eminent scientific community of the time.

On display are some of the objects Henslow collected and donated to the museum as well as the documents which tell us about Henslow’s life and personality. The display runs until May 2012.

JAYNE AUSTIN, EMMA ROODHOUSE  
and ANN AINSWORTH



*Costumes from Cinderella on display in  
Christchurch Mansion*

# Local Courses - Starting in September 2011

## **HISTORY OF COLCHESTER**

**20 weeks -**

**Part 1 September 2011**

**Part 2 January 2012**

This course will introduce learners to some of the main events and activities which have helped to shape the development of Colchester over the last two thousand years. Beginning with the Iron Age period and the coming of the Romans, the course will move swiftly through centuries covering such events as the Norman Conquest, the Cloth Trade and the Siege of Colchester.

*Time:* 20 meetings on Friday afternoons  
1-3pm

*Start date:* Friday 23rd September 2011.  
Part two continues on  
13th January 2012

*Venue:* The Adult Community College  
Wilson Marriage Centre  
Colchester

*Enrolment:* Wilson Marriage Centre  
on 01206 798488 or visit  
[www.adultlearning.essexcc.gov.uk](http://www.adultlearning.essexcc.gov.uk)

*Course Code* EWM5B09  
Part two EWM5B42)

*Time:* 20 meetings on Saturday mornings  
10am-12pm

*Start date:* Saturday 24th September 2011  
Part two continues on  
14th January 2012

*Venue:* The Adult Community College  
Wilson Marriage Centre  
Colchester

*Enrolment:* Wilson Marriage Centre  
on 01206 798488 or visit  
[www.adultlearning.essexcc.gov.uk](http://www.adultlearning.essexcc.gov.uk)

*Course Code:* EWM3A22  
Part two EWM6A60

## **MEETING YOUR ANCESTORS**

**10 weeks -**

**Part 1**

**Further courses in the series continue  
in 2012**

If you would like to find out more about your ancestors and how they lived their lives, then why not consider joining this 10 week course. Researching family history is now more popular than ever and the availability of an increasing number of internet based sources has made it that much easier to delve into your family's past.

*Time:* 10 meetings on Thursday evenings  
7-9pm

*Start date:* Thursday 22nd September 2011  
Part two continues on  
12th January 2012

*Venue:* The Adult Community College  
Wilson Marriage Centre  
Colchester

*Enrolment:* Wilson Marriage Centre  
on 01206 798488 or visit  
[www.adultlearning.essexcc.gov.uk](http://www.adultlearning.essexcc.gov.uk)

*Course Code:* EWM4C08

## **FAMILY HISTORY ON THE INTERNET**

**20 weeks -**

**Part 1 September 2011**

**Part 2 January 2012**

A course designed to introduce learners to some of the main computer-based sources available for researching family history. Although primarily aimed at the beginner, the course should also be of interest to more experienced family historians who would like to gain experience using computer-based sources.



# Concluding The Friends' Lecture Series 2011

## **Tuesday 6th September**

HOWARD BROOKS

*Lost and Found:*

*Excavating Colchester's Medieval Churches*

## **Tuesday 20th September**

JESS JEPHCOTT

*Colchester Postcards:*

*Images of a Bygone Era from Old Picture Postcards*

## **Tuesday 4th October**

DAVID MORGANS

*The Wind and Watermills of Colchester*

## **Tuesday 18th October**

DORIAN KELLY

*Theatre on a Shoestring:*

*The Colchester Rep - The Digby Years*

## **Tuesday 1st November**

PATRICK DENNEY

*The Colchester Cloth Trade:*

*500 Years of Industry*

## **Tuesday 15th November**

ANDREW PHILLIPS

*The Rise and Fall of the Colchester Rag Trade*

## **All at Lion Walk Church at 7.30pm**

Admission prices per lecture:

Members £1 - Non Members £2.

For further details please contact:

the Editor on 01206 517788

Email: [design.constables@btinternet.com](mailto:design.constables@btinternet.com)