

The Friends of Colchester Museums

Newsletter - January 2012



The Friends of Colchester Museums

OFFICERS as elected at the Annual General Meeting 2011

- President* Her Worship the Mayor, COUNCILLOR HELEN CHUAH
- Vice Presidents* MRS JEAN BAKER
MRS BARBARA NAPPER
MARK DAVIES
LEN DRINKELL
ANDREW PHILLIPS
PAUL SPENDLOVE
- Honorary Members* MRS R J BRISTOW
LEN DRINKELL
- Honorary Treasurer* PETER EVANS
5 Grimston Road Colchester CO2 7RN
Telephone 01206 540990 Email: peter.evans7978@btinternet.com
- Honorary Secretary* JANET FULFORD
301 Mile End Road Colchester CO4 5EA
Telephone 01206 851593 Email: jif301@btinternet.com
- Honorary Auditor* ROY ANDERSON
- Committee*
- | | |
|---------------------------------|-----------------|
| MARK DAVIES (<i>Chairman</i>) | PETER EVANS |
| MRS JEAN BLOWERS | CHRIS HALL |
| HARRY CARLO | ANDREW MILLAR |
| PETER CONSTABLE | ANDREW PHILLIPS |
| PATRICK DENNEY | HARRY ROYLE |
| LEN DRINKELL | DAVID WALTON |
- Ex Officio* PETER BERRIDGE (*General Manager, Colchester and Ipswich Museum Service*)
TOM HODGSON (*Community History Manager*)
PHILIP WISE (*Heritage Manager*)
- Newsletter Editor* PETER CONSTABLE
12 Claremont Heights, Essex Hall Road, Colchester CO1 1UZ
Telephone 01206 517788 Email: design.constables@btinternet.com
- Museum Office* Museum Resource Centre
14 Ryegate Road Colchester CO1 1YG
Telephone 01206 282931/2

Newsletter 2012

SUBSCRIPTIONS

Subscriptions for 2012 are now due for renewal. Charges are £7.50 for a single member, £12 for a couple and £18 for a family. Please note that a remittance form to attach to your payment is enclosed with this Newsletter. It would greatly assist our Treasurer if members could send their payment promptly as this will lighten his workload considerably in the coming weeks.

For those who pay by Standing Order, please ensure that you are paying the correct amount. If you would like to begin paying your subscription by Standing Order (which also helps to reduce administration activities), please complete the enclosed Standing Order Form. Please send all payments, and any arrears, to Mr Peter Evans at his address shown opposite. PLEASE NOTE that your Membership Card for 2012, which allows free entry to the Castle Museum, is attached to this Newsletter.

If you no longer wish to remain a Friend of Colchester Museums, please be kind enough to return your Membership Card to the Treasurer.

FROM THE CHAIRMAN

The past year has been one of mixed fortunes for Colchester's museums. Following withdrawal from use of the upper floors of Tymperleys, the confirmed decision by Colchester Council to close the ground-floor Clock Museum without equivalent replacement has caused much critical concern amongst our members and Colchester residents. While the historic building itself may yet be saved for public access, this closure means that the number of museums to visit in the town has now been reduced from 5 to 3 (the pre-1974 level) following the earlier loss of Holy Trinity.

Financial constraints on public services, of course, demand necessarily hard decisions. But

museums represent an irreplaceable part of our on-going national heritage and such a major loss for short-term minimal gain must be a serious cause of regret where civic pride – so strongly expressed by local people – is concerned. At a time when the local tourist economy continues to increase with provision for the visual arts significantly promoted and further benefits likely from the Olympic Games in 2012, reducing Colchester's already limited heritage attractions will surely be seen as short-sighted in the light of history.

All is not completely lost, however, as a still more select proportion of Bernard Mason's generously donated clock collection has now been tastefully shoehorned into a small gallery in the Hollytrees Museum. Despite its limitations, this new display is well worth a visit and there is also a promise of on-line digital access for reference purposes to the remaining 85% of the clocks now consigned to storage.

Of greatest good news is the successful bid for major funding by the Heritage Lottery Fund towards the Castle Development Project due to start in 2013. In view of its significance the Friends' Committee has agreed to make an unprecedented contribution towards this project of £30,000 over 3 years. This has only been possible because of the level of support that the Friends enjoy.

Encouragingly our membership numbers continue to increase – a sure indication of the perceived value of Colchester's fine museums quite apart from what our society has to offer. We now have 751 members in all categories amounting to over 1,500 supporters in total. As previously mentioned there is now a website for The Friends Of Colchester Museums (TFOCM.com) and we would be grateful if those with e-mail addresses could register themselves if they have not already done so.

MARK DAVIES

TREASURER'S TOPICS

The Gift Aid claim has gone in for the year ended 31st March 2011. As tax rates are still low, we should receive about £1,500. This will include tax reclaimed on subscriptions where members have recently completed the certificate. We can claim back to the year 2000.

If you have joined the Friends recently and have not yet completed a Gift Aid certificate, please ask me for one.

Please remember that although we have enclosed your Membership Card, this does not mean that you have paid (unless you joined within the past few months). When the Committee mails this Newsletter and other information to you, the card will be paper-clipped to it to be sure it does not get lost. If you do not pay by Banker's Order, please make a payment. If in doubt about the Banker's Order, please check your statement.

It is sad to think about legacies, especially at this time of year, but the Friends have received them in the past. If you would like to mention the Friends in your Will please do so - but bear in mind that we do not want to lose you yet!

P. S. If you have set up a Standing Order please ask the bank to quote your name on the credit. I cannot identify the payment without it. Many thanks.

PETER EVANS *Hon Treasurer*

MEMBERSHIP UPDATE

Our membership levels remain healthy with 751 signed up compared with 721 for the same period last year. This, of course, includes all categories of membership, and the total number of individual members could be around 1500. So please keep spreading the word about the benefits of joining the Friends.

BOOK THIS DATE!

The St Botolph's History Fayre -

Saturday 21st July 2012.

The theme is to be decided.

OUTINGS 2012

26th June 2012. Evening Trip to Framlingham Castle, Lanman Museum and the 14th century St Michaels Church.

We depart from Sheepen Road Car Park 18.00 hours. We may arrange a pick up point near Ipswich Road. Cost £12.00 inclusive of all travel, guidance and entry fees. Literature concerning the destinations will be available.

This is an exclusive visit to Framlingham Castle, which was home to the Bigods, Mowbrays and Howards over the centuries. The Castle was also the residence of Mary Tudor before she became Queen.

There are many timber framed buildings in the town dating from the Middle Ages. We will be joined by a member of the Local History Society for a talk and guided tour. St Michaels Church will also be open and it contains some of the finest tomb sculptures in Europe, including those of the Dukes of Norfolk.

To book your place please contact and send your payment to Peter Evans, 5 Grimston Road, Colchester CO2 7RN specifying if you require a 'pick-up'.

10th July 2012 Day Excursion including a visit to the Turner Contemporary Gallery (Winner of the Best UK Destination 2012) on the beach in Margate and Quex House - The Powell Cotton Museum, Ceramics Gallery and Gardens.

Cost £25.00 inclusive of all travel, guidance and entry fees. Literature concerning the destinations will be available on the coach.

We depart from outside Gala Bingo, Osborne Street at 08.30. We may also arrange a pick up point outside Boots at Stanway. The return journey is due to arrive back in Colchester at approximately 19.45.

We are due to arrive at Quex at 11.00 and lunchtime will be spent there. Colonel Percy's Coffee Shop has sandwiches, cakes, tea, coffee and Solleys Ice Cream at reasonable prices. There is also a restaurant.

The coach departs at 15.00 for the Turner Contemporary (about 5 miles away). The gallery and its cafe/restaurant will be open.

We will depart for home at 1700 to allow time in the gallery or to visit the nearby conservation area.

This is a definitely not to be missed visit to the home of a number of collections made by the explorer Major Percy Powell-Cotton. Birchington in the Isle of Thanet was where John Powell purchased the 15th century Quex Estate in 1777, completed by his nephew in 1813, and remodeled and extended in the late 19th century.

Shortly after the outbreak of war in 1914 , Major and Mrs Powell-Cotton made their home available to the Red Cross for use as an auxiliary military hospital. The family which included three young children, moved out for the duration into one of the staff cottages on the estate called 'The Bothy'.

There are eight galleries containing local archaeology, ceramics, textiles, weaponry, jade and ivory from Europe, China and Japan. Still the family home, only part of the house is open to the public.

The Trust for Thanet Archaeology is also situated here in an ancient barn and there are 15 acres of gardens developed in Victorian times.

To book your place please contact and send your payment to Peter Evans, 5 Grimston Road, Colchester CO2 7RN specifying if you require a 'pick-up'.

For those with internet facilities both venues have excellent websites.

For further information regarding either outing please contact David Walton, Friends of Colchester Museums, 14 Ryegate Road,

Colchester CO1 1YG or email
waltoday@gmail.com
Telephone: 0779 659 2296.

DAVID WALTON

EAST ANGLIAN FILM ARCHIVE

We approached the East Anglian Film archive, based at the University of East Anglia, about the possibility of them showing some of their films to us. Whilst they were unable to do this, they did pass on some interesting news. They are about to relaunch their website www.eafa.org.uk

and it will be possible to view over 1200 films (lasting 200 hours) for free. This will include films of Colchester and the district.

The relaunch should be completed by the time you read this.

HERITAGE OPEN DAYS

I am sure that many members took advantage of the Architectural Heritage weekend in September 2011 and I understand that it was as well supported as previous years. The Museum Service coordinates the project.

You can become involved with this by becoming a steward for a morning or afternoon session. This means that you act as host at one of the historical sites, such as St John's Abbey Gate or St Martin's Church, and are given background information so you can answer questions. Visitors are not just locals but sometimes come from abroad.

The next weekend will be 8th and 9th September 2012. If you are able to help or would like more information, please contact Ann Turner on 01206 250894 for more details.

PETER EVANS

Museum News

COLCHESTER CASTLE REDEVELOPMENT

On 19 July the Heritage Lottery Fund

awarded £3,267,400 towards a major redevelopment of Colchester Castle. The Heritage Lottery Fund is contributing 77% of



the funding towards this £4.2m project. Match funding comes from Colchester Borough Council, the INTERREG IVA programme France (Channel) – England of the European Union’s European Regional Development Fund, Renaissance museum hub funding, the Friends of Colchester Museums, the Essex Heritage Trust and the Friends of Colchester Roman Wall.

Project groups have been set-up and are progressing well. The Museum Service has re-appointed Cassie Herschel-Shorland as the project’s access consultant. Cassie will be ensuring that an inclusive design approach is embedded in both the building and display works.

The two user forums, for young people and for older people, which were set up during the development phase of the project to help inform the creation of the designs for the new displays, met in September and have further meetings planned for November. PORTAL, the museum’s access advisory group, and the Teachers Advisory Panel also continue to be closely involved with the project.

TOM HODGSON

Images opposite:

Castle Re-development visuals by Redman Design

MUSEUMS IN THE COMMUNITY: MENTAL HEALTH AND OUTREACH SERVICES

The Museum Service’s Mental Health Officer John Pollard has been supporting ‘Art in the Community’, a mental health arts group, and has just started a new project with them focusing on Hollytrees Museum and the Natural History Museum. The project involves a learning aspect where museum curators work directly and flexibly with participants to increase their knowledge of heritage as they create work that is based on the collections.

During July and August the Museum Service ran two ‘Talking Objects’ projects in

partnership with the British Museum, Essex Social Services, the Mercury Theatre and Signals Media Arts. The projects focused on the Colchester Mercury, a Roman bronze figure, and the two Roman military tombstones of Facilis and Longinus. Eighteen young people learnt more about these objects from Paul Sealey, the Curator of Archaeology. The films of these projects are currently being edited and will be available soon.

Continuing the partnership developed with NCP on the Osborne Street Car Park project, the Museum Service ran a second graffiti-art project with young offenders in the Nunns Road car-park. The work depicts various scenes and characters from Colchester’s history, from the Roman invasion to the local pop group Blur.

JOHN POLLARD AND AMY COTTERIL



NEW ACQUISITIONS

It has been a rather quiet period for acquisitions recently. However significant objects continue to be added to the Colchester museum collection.

In the run up to the centenary of the outbreak of the Great War in 1914 the Museum Service is always pleased to be able to acquire related memorabilia. The latest object is an example of embossed brass box given by Princess Mary, the seventeen-year-old daughter of King George V and Queen Mary, to all serving sailors and soldiers at Christmas 1914.

This box is a rarer version of the more popular tobacco tin and was given to non-smoking troops and boys. Although the sweets it once contained are long gone the gift of a bullet pencil, made from a brass .303" cartridge case, still survives.

The collection of local views has been boosted by the donation of a watercolour by Thomas Hosmer Shepherd. Shepherd (1792 – 1864) was well known for his architectural paintings, firstly of buildings in London and later Edinburgh, Bath and Bristol. His work is characterized by an attention to detail, along with life-like scenes that contained people, carriages and horses. This recent acquisition is entitled 'A View of the Outskirts of Colchester', and shows the town from the north across what would later be Lower Castle Park with the Castle in the distance. It is dated to the period 1810–1840. There is another painting in the collection by Shepherd of St Nicholas' Church on the High Street.

Lastly, the Friends were directly involved in the purchase at a recent Reeman Dansie

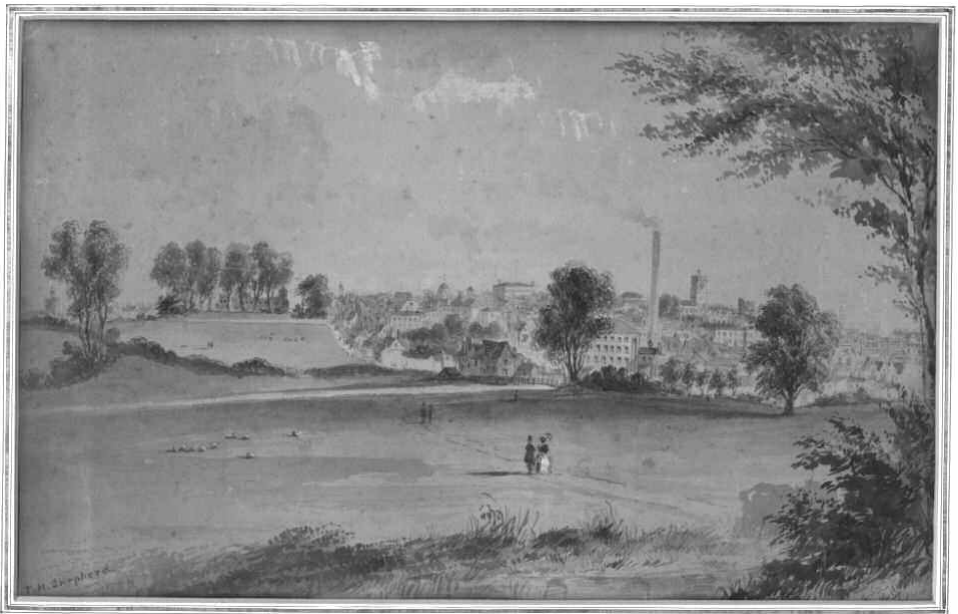


auction of the architect's sign board of Duncan W. Clark. This in the 'Arts and Crafts' style of the 1920s and was displayed at Clark's offices at 3 High Street, Colchester. It measures 82 x 45 cm (32 x 18 inches).

A very distinguished local architect, Clark was responsible for Cowdray Crescent and Barclays Bank, both in the High Street. This acquisition was donated by the Friends, of whom Duncan Clark was the first Honorary Secretary.

Thanks are due to Len Drinkell for his instrumental role in saving this important item of Colchester's modern history.

PHILIP WISE



COLCHESTER AND IPSWICH MUSEUMS LAUNCH A NEW CUSTOMER FOCUSED WEBSITE

Colchester and Ipswich Museums has launched www.cimuseums.org.uk, a brand new, customer-focused, interactive website. Visitors to the site will be able to see information on all areas of the Museum Service in one place for the first time. It provides detailed information on each museum venue and what they can see and do, forthcoming events and exhibitions, close-up photographs of high-lighted objects and the opportunity to delve into the collections pages to find out more.

The new website also includes a new area for schools, with increased access to downloads for visits, details on a wide range of activities for the permanent and temporary exhibitions and a gallery to show children's work connected to our school resources that we provide for the community.

MARIE TAYLOR

HERITAGE ROUNDUP

Colchester Town Walls

Repairs to the Priory Street stretch of the Town Wall were undertaken during the period August – October 2011. Tenders have been returned for a major programme of repair work to the Middleborough/Balkerne Way stretch, part funded by English Heritage. A contractor will be appointed shortly. A public meeting was held in Colchester Town Hall in conjunction with the Friends of the Roman Wall to consider the revision of the 'Roman Wall Management Plan' with many useful contributions. Work is continuing on the project to introduce new interpretation around the Town Wall as part of the wider heritage element of the Colchester Castle Redevelopment Project.

Lastly at the instigation of the Museum Service, the Borough Council was successful in its attempt to remove the advertising hoardings

from the Town Wall at Middleborough. Further work will now be required to further improve the setting of the monument at this point and liaison with English Heritage is ongoing.

Colchester Roman Circus

A meeting with the designer Headland Design Associates took place in early October at which the detailed designs for the two installations on the Flagstaff Road playground site were considered by Museum Service staff and colleagues from Parks and Recreation and Planning. A further meeting is planned in December.

PHILIP WISE

A new display of Colchester-made clocks is now open in Hollytrees Museum

A selection of clocks, previously on display in Tymperleys Clock Museum, can now be seen in one of the ground-floor rooms at Hollytrees. The room, now renamed 'The Bernard Mason Gallery', includes a mixture of longcase, lantern and bracket clocks, as well as a selection of



pocket watches. The display emphasises not only the importance of the town as a provincial clock-making centre, but also the significant contribution made by Bernard Mason to collect and preserve these clocks for future generations. Seven of the longcase clocks are wound weekly (although we can't guarantee they'll tell the right time!) so whenever you visit, you can hear the beautiful sounds of the chimes.

CATHERINE NEWLEY

'Colchester 24' Twenty-four hours in the life of our town

Hollytrees Museum has revealed its latest exhibition entitled 'Colchester 24'. This exhibition captures visitors' interest as it takes them on a nostalgic look at Colchester as a town. The exhibition will be open until 26th February 2012.

In 1986 the 'Just Another Day' project created a snapshot of Colchester over a 24-hour period. A group of 50 photographers captured as many aspects of everyday local life as possible. They took over 1000 images, including

pictures of punks sitting on the wall at Holy Trinity Church and working life on the river Colne. A quarter of a century on, 'The Great Colchester Photo Shoot' reprised this idea in October 2011 when organisers recreated the same process and the general public photographed the people, places and activities that reflect Colchester today.

This time the photographs will be displayed on the Colchester 24 website, where they will be available for everyone to see and some images will be displayed in the exhibition at Hollytrees.

CIARA CANNING

Call for reminiscence objects

Part of the outreach work we do at the Museum Service is with reminiscence resources. The Memory Boxes that we have developed contain a mixture of objects relating to topics that will soon get a conversation going between the participants. These nostalgic, thought-provoking boxes can be borrowed by family members, social groups or care homes.



© George Royffe



There are different boxes available at the moment and with donations from members of the public resources are growing all the time. The themes we have are a mixture of decade-specific items, such as the 1930/40s or 1950/60s, and topical boxes such as childhood and holidays.

But we need some help to capture more memories from the past to help communities and people in the present. We would be pleased to receive any objects which you feel would be appropriate for adding to this handling collection. There are certain areas that we are concentrating on at present. These are: household objects, trivia, clothes/shoes relating to the decades from 1930s-1970s, childhood activities, sports, items linked to societies, things relating to occupations/work, going away on holiday (for example, brochures, ticket stubs), royalty items or items for people who have been born in a different country before coming to the United Kingdom or maybe something that they would have had when a child and brought over with them.

Unfortunately we are unable to accept anything that is bulky as reminiscence boxes are not that large and need to be carried about. However some items you may think of as rubbish may actually be just what we are looking for! So if you are in any doubt, please email or give me a call.

(geri.cowell@colchester.gov.uk or telephone on 01206 506 936).

If you would like to hire one of the reminiscence boxes they cost just £5 per week. We offer a loyalty card scheme, for every four boxes you hire your fifth will be free. The boxes should be booked in advance and collected from either Christchurch Mansion, Ipswich (01473 433554) or Colchester Castle (01206 282939).

GERI COWELL

FORTHCOMING EXHIBITIONS IN 2012 AT COLCHESTER CASTLE

‘Starting from Scratch’ runs from 18th February until 29th April 2012 and is an exhibition of paintings by Brian Graham.



Clacton, Essex, England.

© Brian Graham

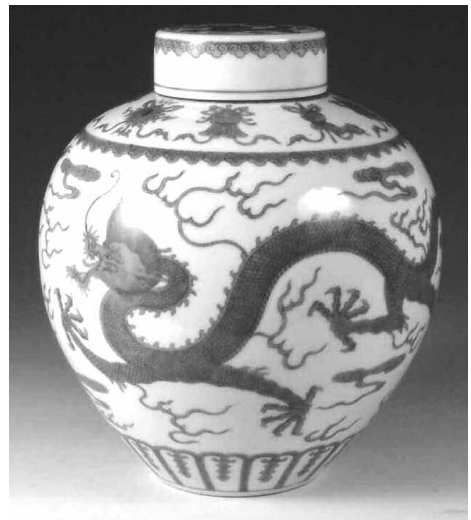
Brian draws his inspiration from archaeological sites in Britain with evidence of our earliest ancestors, including Clacton in Essex, Pakefield in Suffolk and Happisburgh in Norfolk. These new works are atmospheric and evocative paintings which are Brian's homage to the courage and determination of Britain's first inhabitants and to the landscape of the British Isles. This is a touring exhibition which will be accompanied while on display at Colchester Castle Museum with a selection of ancient stone tools drawn from the archaeology collections at Colchester and Ipswich. Brian Graham's work is in the collections of London's Natural History Museum, Huddersfield Art Gallery and Dorset County Museum.

'Treasures of China' opens on 30th June 2012 and will close on 7th January 2013. This is an international world class exhibition which will showcase seventy of the treasures in Nanjing Museum, the second largest museum



in China. It will explore the rise of Imperial China from the earliest Stone Age tombs to the time of the last emperor and take you on a journey across 8,000 years of Chinese history.

Stunning objects include a 2,000-year-old, life-size jade suit from the tombs of the Han Dynasty rulers, an exquisite gold cicada sitting on a jade leaf worn by a Ming Princess nearly 600 years ago and the luxury items and ornaments that adorned the palace of the last





of the imperial families as the tumult of the twentieth century changed China for ever.

Alongside this rich history will be a celebration of Chinese crafts and the enduring appeal of animals in Chinese culture. A delicate jade mouse will join an 8,000-year-old pottery pig and three wise monkeys immortalised on a lacquer plate amongst a host of other creatures who will delight and fascinate family audiences.

Images left:

Top: Bronze enamelled elephant.

Below: Covered green and white jar.

Image above: Ceramic pot with humans and birds.

FORTHCOMING EVENTS IN 2012

Tea and Talks @ Colchester Castle

All talks start at 3pm. Ticket holders will be admitted to the castle free after 2.30pm. £3.50 per talk (£3 for Friends of the Museums). Enjoy all talks for £15 (£13 for Friends of the Museum). Book your place on 01206 282940, or by calling into Hollytrees Museum.

‘Buried! The investigation, preservation and presentation of once-concealed garments.

Saturday 21st January

Why would anyone deliberately conceal items of clothing within the walls of buildings? Find out about current research into this practice, looking at finds across the UK, including an 18th-century garment stiffened with whalebone, and a 17th-century decorative coat currently on display in the castle’s ‘Buried’ exhibition. Talk by Dinah Eastop and Kate Gill.

‘The Early Human Occupation of Britain and Europe’.

Saturday 3rd March

The last decade has seen tremendous advances in our understanding of early humans in Europe and in Britain, and this talk will review the major developments. These include significant discoveries of new and very ancient sites in Norfolk and Suffolk, and increased chronological resolution of the successive phases of Neanderthal and modern human occupation. Talk by Chris Stringer, Natural History Museum London.

The History of Bourne Mill.

Saturday 10th March

Beginning in Elizabethan Colchester in 1591, this talk will explore the social, political and economic lives of the Lucas family of St John’s, Colchester, through the walls of their very own banqueting hall. Talk by Lynette Bloom, Bourne Mill.

Starting from Scratch.

Saturday 17th March

Artist Brian Graham talks about his exhibition of paintings entitled ‘Starting from Scratch’ (on display in the museum). The exhibition focuses on 33 sites of some of the earliest human activity in the country, many of which are based in East Anglia, and what was

behind his motivation to produce his paintings. His talk will focus particularly on the sites relating to the local area. Talk by Brian Graham, the artist featured in 'Starting from Scratch'.

Colchester: 2000 years of History. Saturday 24th March

Local historian Patrick Denney takes you on a whistle-stop tour of Colchester's history from Roman times to the 20th century, stopping at all the highlights. You will get a chance to see how Colchester evolved over this period.

A History of Colchester Castle. Saturday 31st March

Join Peter Berridge, Museum Manager, for this journey through the history of Colchester Castle. The Castle has had a chequered history from its construction in the 11th century, through its times as a fortress, a home, a particularly nasty prison to its current use as a museum. Hear some interesting facts, and also get a glimpse into the future, as the next stage of the Castle's development takes shape.

These are just some of the events that are on between January–June 2012, log on to www.cimuseums.org.uk/whats-on to find out more!

Dark Tours @ Colchester Castle. Thursday 9th February

Come to the Castle for an 'after hours and after dark' experience, where visitors will be taken on a tour bringing out some of the Castle's more gruesome and dark history. Visitors will be taken into the vaults under the Castle, on the roof, into the prisons and around the museum, where they will hear stories of witches, martyrs, plague, disease and death. Over 16s only. Unfortunately the tour is not wheelchair accessible. 6pm, 7pm, and 8pm.

£4.50 per person, £4 for Friends of the Museum.

These events are very popular so booking is essential. Please book in advance by calling 01206 282940 or by calling into Hollytrees Museum, Colchester. Tickets must be paid for in advance.

Poetry at the Castle @ Colchester Castle Saturday 28th January and Saturday 3rd March (Two-session course)

Taking inspiration from Roman objects and the surroundings, visitors can create a piece of poetry. The first session will look at how an object can ignite your imagination, as you look beyond it into the lives of people in the past. You can then write your poem, and return as a group for the second session to 'workshop' your piece. This workshop will be facilitated by Sheena Clover of the Mosaic, Colchester's Poetry Stanza Group. 10am–1pm. £15 for both sessions (includes Castle entrance on each day). £10 for Friends of the Museum.

COLCHESTER RECALLED

As increasingly more Friends are showing interest in the town's Oral History Group, you are invited to attend its monthly meetings on Thursdays in the Lecture Room at Colchester Institute, Sheepen Road, at 7pm.

Starting on 19th January Dr Elizabeth Hall lectures on the *Pioneer Lady Doctors of Colchester*, while on 16th February Prue James' subject is the *Shipwreck That Grew Into Lillies: the Extraordinary Nurseryman Isaac Bunting*. On 15th March Ashley Cooper's subject is the *Disappearing World of Rural Essex*.

Admission is £1 per evening, which begins with recordings of reminiscences, followed by refreshments and the lecture.

Complete details are available from ANDREW PHILLIPS, telephone 01206 546775.

Local Courses - Starting in September 2011

HISTORY OF COLCHESTER

20 weeks -

Part 1 September 2011

Part 2 January 2012

This course will introduce learners to some of the main events and activities which have helped to shape the development of Colchester over the last two thousand years. Beginning with the Iron Age period and the coming of the Romans, the course will move swiftly through centuries covering such events as the Norman Conquest, the Cloth Trade and the Siege of Colchester.

Time: 20 meetings on Friday afternoons
1-3pm

Start date: Friday 23rd September 2011.
Part two continues on
13th January 2012

Venue: The Adult Community College
Wilson Marriage Centre
Colchester

Enrolment: Wilson Marriage Centre
on 01206 798488 or visit
www.adultlearning.essexcc.gov.uk

Course Code EWM5B09
Part two EWM5B42)

FAMILY HISTORY ON THE INTERNET

20 weeks -

Part 1 September 2011

Part 2 January 2012

A course designed to introduce learners to some of the main computer-based sources available for researching family history. Although primarily aimed at the beginner, the course should also be of interest to more experienced family historians who would like to gain experience using computer-based sources.

Time: 20 meetings on Saturday mornings
10am-12pm

Start date: Saturday 24th September 2011
Part two continues on
14th January 2012

Venue: The Adult Community College
Wilson Marriage Centre
Colchester

Enrolment: Wilson Marriage Centre
on 01206 798488 or visit
www.adultlearning.essexcc.gov.uk

Course Code: EWM3A22
Part two EWM6A60

MEETING YOUR ANCESTORS

10 weeks -

Part 1

Further courses in the series continue in 2012

If you would like to find out more about your ancestors and how they lived their lives, then why not consider joining this 10 week course. Researching family history is now more popular than ever and the availability of an increasing number of internet based sources has made it that much easier to delve into your family's past.

Time: 10 meetings on Thursday evenings
7-9pm

Start date: Thursday 22nd September 2011
Part two continues on
12th January 2012

Venue: The Adult Community College
Wilson Marriage Centre
Colchester

Enrolment: Wilson Marriage Centre
on 01206 798488 or visit
www.adultlearning.essexcc.gov.uk

Course Code: EWM4C08

The Friends' Lecture Series 2012

Tuesday 3rd April

How We Got Where We Are

KATH WOOD

Note: this lecture is at Firstsite at 7.30pm

All the lectures below are at Lion Walk Church at 7.30pm, except where stated.

Tuesday 17th April

Bread and Circuses: Public Entertainment in Roman Colchester

MARK DAVIES

Tuesday 1st May

A Ferret's Tale: the Story of the Excavations of the Tudor Hunting Lodge at Wormingford by the Colchester Archaeological Group

DON GOODMAN and ANDREW WRIGHT

Tuesday 15th May

Marshall, Hung, Drawn and Quartered: the Story of St Johns Abbey

DAVID P WALTON

Tuesday 29th May

The Dedham Vale: Area of National Beauty and the Stour Valley

ROBERT ERITH

Tuesday 12th June - 7pm start

Annual General Meeting followed by
The Treasures of China

CAROLINE McDONALD

Tuesday 4th September

Medieval Colchester: Religious Houses, Godly Devotion, Crime and Punishment

PATRICK DENNEY

Tuesday 18th September

Offensive Privies, Pet Foxes, and Rude and Ignorant Gaolers: the Last Days of the Prison in Colchester Castle

PETER BERRIDGE

Tuesday 2nd October

Extraordinary Victorians

ANDREW PHILLIPS

Tuesday 16th October

Essex Seaside Heritage

NORMAN JACOBS

Tuesday 30th October

Railways to the Coast

ADRIAN WRIGHT

Tuesday 13th November

Recent Archaeological Work in Colchester

HOWARD BROOKS

Admission per lecture: Members £1

Non members £2.

For further details please contact:

David Walton, Friends of Colchester Museums,

14 Ryegate Road, Colchester CO1 1YG or

email: waltoday@gmail.com

Telephone: 0779 659 2296.

KNOW YOUR COLCHESTER?

The first correct answers (see opposite) to this competition featured in our previous Newsletter were supplied by Mr Peter Jones of 19 Heathfields, Eight Ash Green, Colchester.

Our thanks to all those who took part.



*The Seahorse Inn
High Street*



*The Rose and Crown
East Street*